

# Assessment Quiz

All the assessment stuff you need to know is on the assessment flow, just one sheet of paper. The problem is to set it in your memory so that no matter how stressed you are, you still know the steps like you know your name. There is a copy of this quiz on the class Discussion Group. You can print it out from there so you can take the quiz over and over till you get it right.

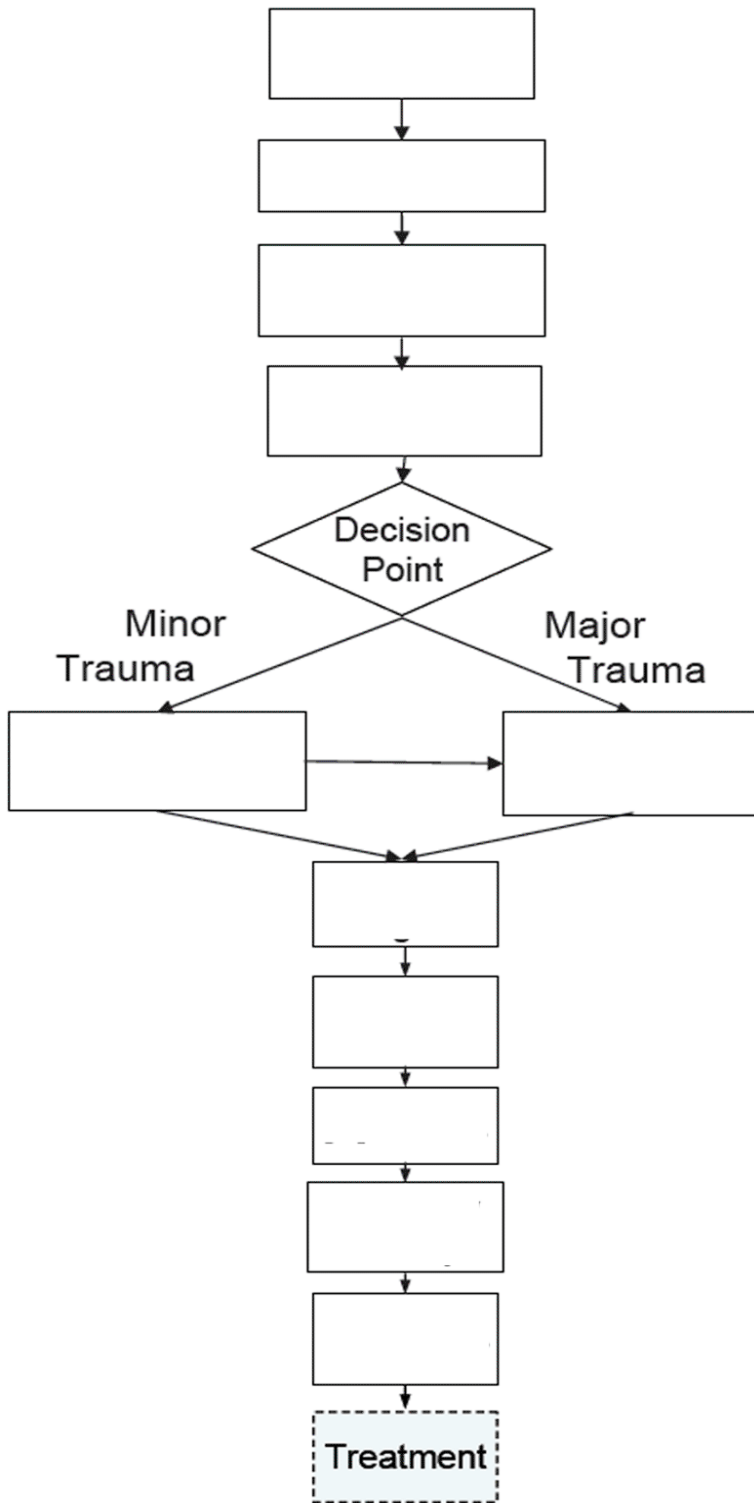
So try the following steps:

- Read the Guide
- Listen to the CD or mp3s
- Study the Assessment Flow
- Fill in all the boxes on the blank flow in the quiz
- Complete each of the fourteen lists that make up the flow
- Check your work against the Assessment Flow
- When you have it nearly perfect, begin practicing on a loved one with someone watching you and checking against the flow.
- If you live near other class members, give them a call and get together to practice.

Do it all again and Again and AGAIN. It's hard; it's painful; it's essential for EVERY patroller. You must have the stuff in this quiz ROCK SOLID before the first class meeting. On the first day of class, we'll give you a copy of this quiz and you must be able to fill in all the blanks. If you can't do it very well on the first day of class, come back next year because you aren't ready for the course.

If you have questions or problems, post the questions on the Discussion Group or give me a call at 530-562-4341.

# Name the Assessment Boxes



## **Scene Size-Up**

- 1.**
- 2.**
- 3.**
- 4.**

## **Introduction**

- 1.**
- 2.**

## **First Impressions**

**Listen=**

**Look=**

**Feel=**

## **LOR (Level of Responsiveness)**

- 1.**
- 2.**
- 3.**
- 4.**

## **“Always” Questions**

- 1.**
- 2.**
- 3.**
- 4.**
- 5.**
- 6.**

## **HEAD**

**H=**

**E=**

**A=**

**D=**

## **Focused Survey**

- 1.
- 2.
- 3.
- 4.

## **Urgent Survey**

- 1.
- 2.
- 3.
- 4.
- 5.
- 6.
- 7.
- 8.
- 9.

## **S-OPQRST**

- O=
- P=
- Q=
- R=
- S=
- T=

## **Vital Signs**

### **Pulse**

- 
- 
- 

### **Respirations**

- 
- 
- 
-

## **Radio Call**

**S=**

**A=**

**I=**

**L=**

**E=**

**R=**

## **[S]AMPLE**

**S=**

**A=**

**M=**

**P=**

**L=**

**E=**

## **Full Body Survey**

**1.**

**2.**

**3.**

**4.**

**5.**

**6.**

**7.**

**8.**

**9.**